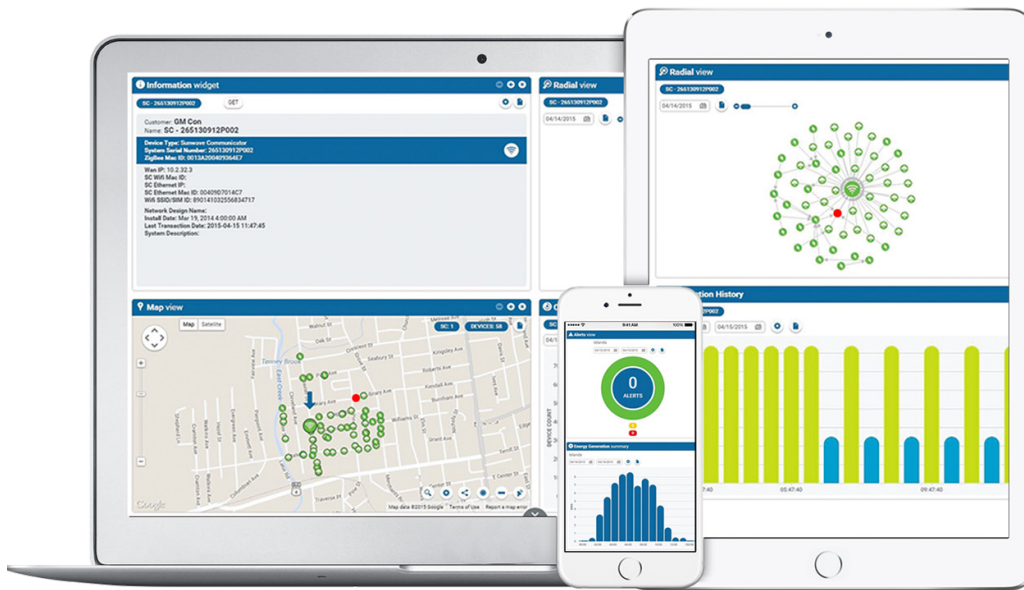


+ THE PETRA INTELLIVIEW® ASSET MANAGEMENT SYSTEM

Petra's IntelliView platform enables a dynamic view of all network activity, giving municipalities the ability to instantly see network performance and energy usage, control lighting, identify failures, optimize O&M, and manage security.



Get the best view of your Smart City assets



Communication Module

The Dashboard for Network Monitoring and Management

The Communication Module is the foundation of the IntelliView platform, providing users with a dashboard view of the communications network. Alerts, performance summaries and mesh networking diagnostics are provided for problem identification and resolution on an exception basis.

The Communication Module allows the user to configure the network for maximal system uptime. Component monitoring at the nodal level allows for efficient reporting or troubleshooting.

Security Module

The Management Dashboard for Sensor and Security applications

The Security Module (SM) provides users with a single dashboard to monitor and manage sensor and security applications. Built on an open and extensible communications platform, the SM enables universal compatibility for integration across security and sensor network assets.

Lighting Module

Remote management for Smart Lighting solutions

The Lighting Module controls when streetlights are turned on and off or dimmed, integrating seamlessly with traditional dusk-dawn sensors. Lights can be managed individually or grouped. Commanded actions can be set to a recurring schedule, on an as-needed basis, or in response to a defined event.

Alerts for bulb outages and day burners reduce the burden on call centers and provide streamlined maintenance. The ability to monitor network performance also enables preventative maintenance, optimizing labor assets.